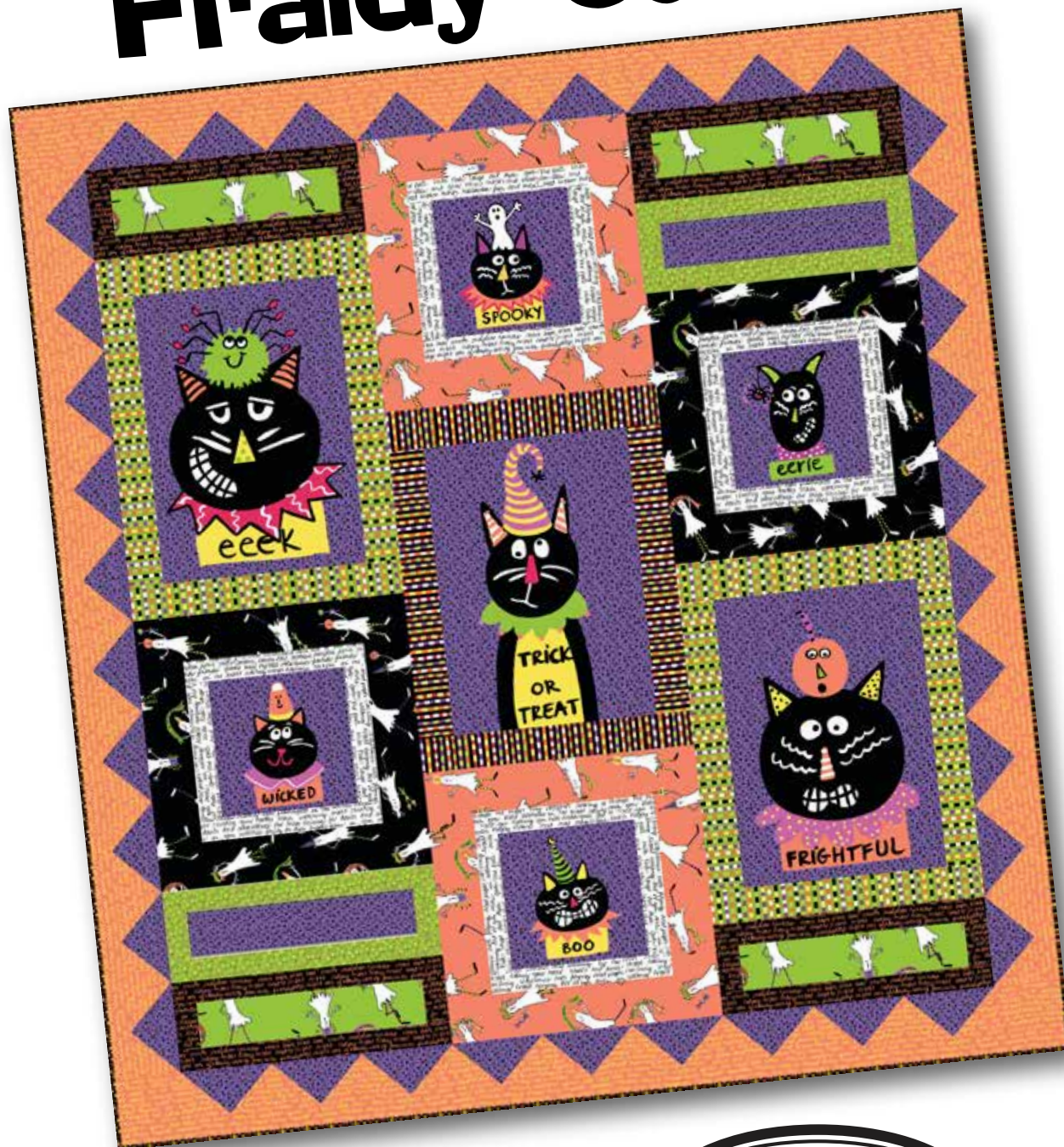


Fraidy Cats



Quilt designed
by Jean Ann Wright
Quilt size: 42" x 46"



makower uk®

www.andoverfabrics.com

Fraidy Cats

Fabrics by Carol Eldridge

Fabrics shown are 10% of actual size. Fabrics used in quilt pattern are indicated in red.



makower uk®

1384 Broadway
New York, NY 10018
(800) 223-5678

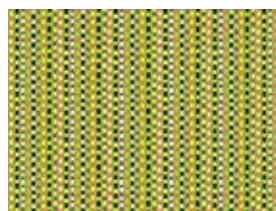
www.andoverfabrics.com

Bolts needed to cut project kits

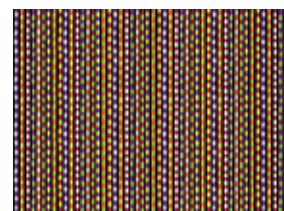
Fabrics	10 kits	20 kits	30 kits
7109-M	1	1	2
7113-MP	1	1	2
7111-MG	7111-MK	7111-MO	7112-MK
7112-MO	7112-MW	71113-MG	7113-MK
5263-G	5263-M		
	1	1	1
Backing Fabric			
7110-M	2	4	6
*Yardage needed for backing (3 yards per kit)			



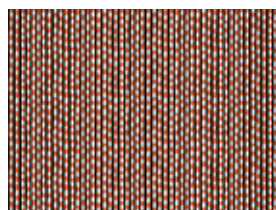
7109-M 1 panel ⅔ yd



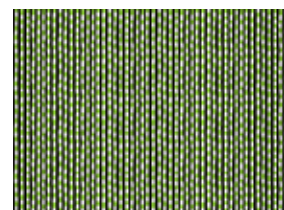
5263-G ¼ yd



5263-M ⅛ yd



5263-K



5263-KG



7110-M 3 yds (backing)



7112-MK ¼ yd



7112-MO ½ yd



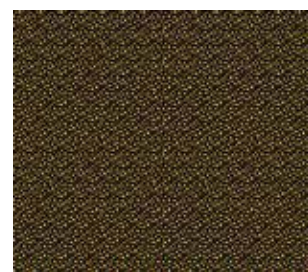
7112-MW ¼ yd



7113-MG ⅛ yd



7113-MP ¾ yd



7113-MK ⅔ yd (binding)



7111-MG ⅛ yd



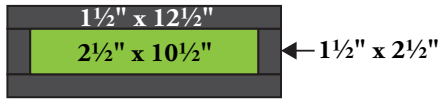
7111-MK ¼ yd



7111-MO ¼ yd

Fraidy Cats Quilt

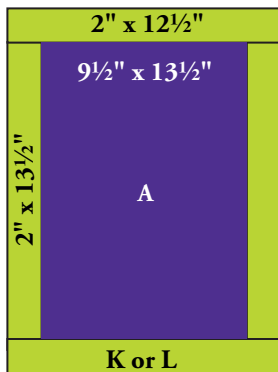
5. Prairie Points: Prepare the prairie points as follows. Fold a Fabric I $4\frac{1}{2}$ " square in half horizontally, right sides out (Diagram 1). Press the fold. Fold both corners down and press (Diagram 2). This is the front side. Repeat with the 38 squares.



Setting Block

Make 4 with B and E

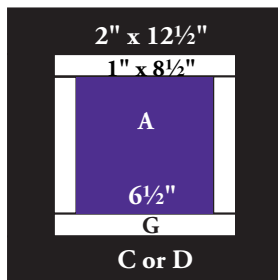
Make 2 with H and I



Large Block

Make 2 with K

Make 1 with L



Square Block

Make 2 with C

Make 2 with D

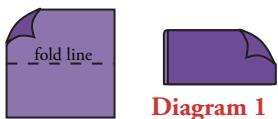


Diagram 1

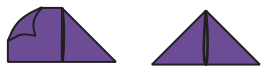


Diagram 2

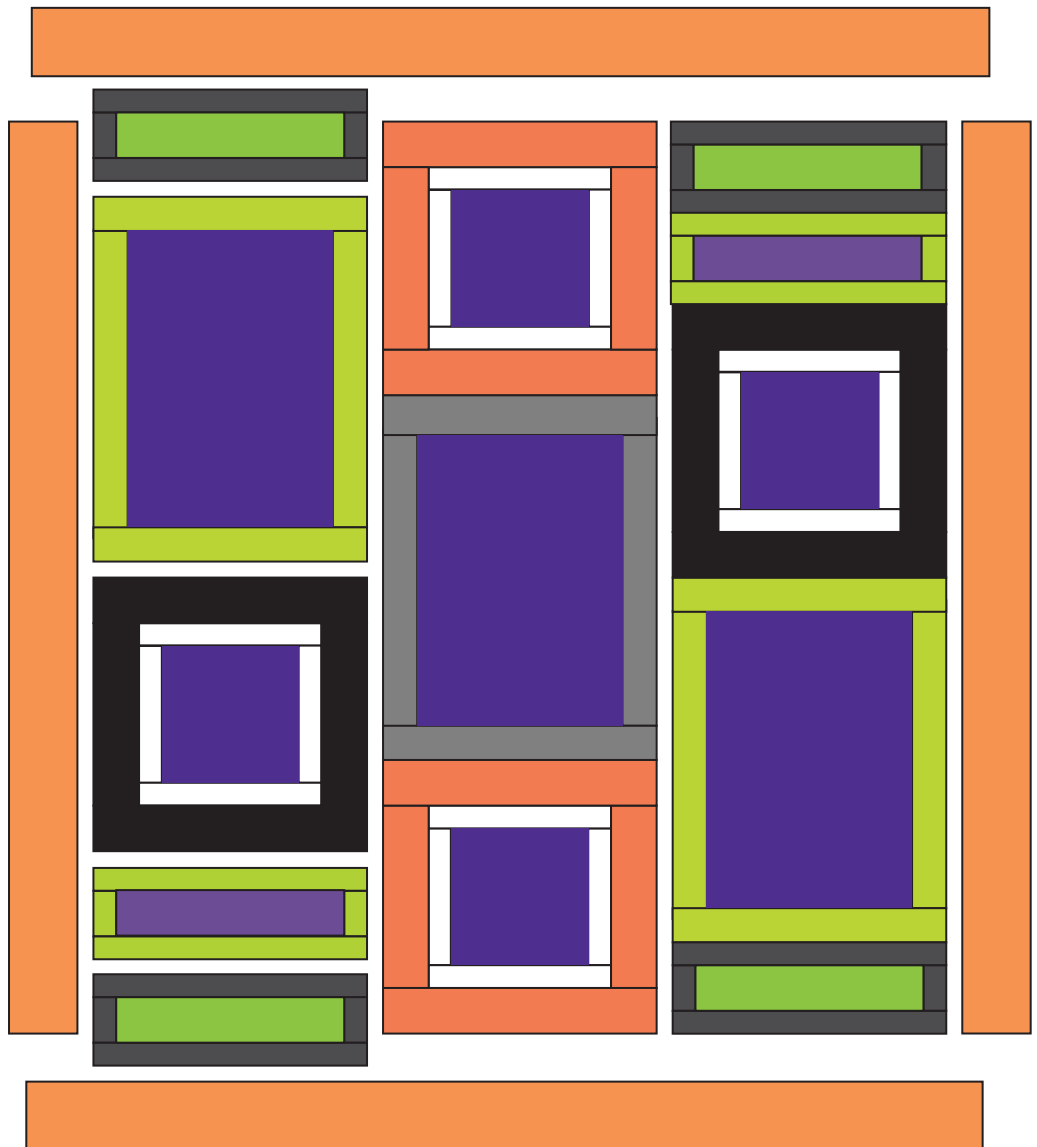


Diagram 3

6. Position and pin 9 prairie points front side down along the top edge of the quilt, raw edges even. Prairie points will overlap one another and should fill the length evenly. Repeat on the bottom edge. Evenly position 10 prairie points along each side of the quilt. The prairie points should meet in the corners as shown in Diagram 3.
7. Stitch the shorter Fabric F borders to sides of the quilt, catching raw edges of prairie points in the seam. Press the border and the prairie points away from the quilt, pressing the seam allowances toward the quilt. Add the longer borders to the top and bottom and press the prairie points and the border away from the quilt. If you prefer, tack the point of each prairie point to the border to hold in place.

Finishing the Quilt

8. Layer the quilt with batting and backing and baste. Quilt in the ditch around borders and block patches. Quilt around the printed motifs in the blocks. Outline quilt around the prairie points. Bind to finish the quilt.



Quilt Diagram

Fraidy Cats

by Carol Eldridge



makower uk®

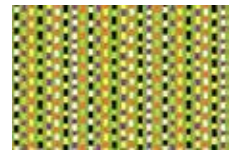
1384 Broadway
New York, NY 10018

(800) 223-5678

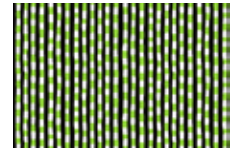
www.andoverfabrics.com



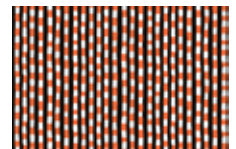
7109-M*



5263-G*



5263-KG



5263-K



5263-M*



7110-M*



7111-MG*



7111-MK*



7111-MO*



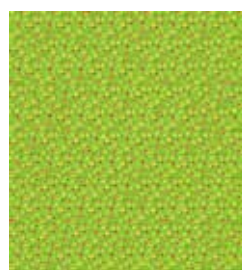
7112-MK*



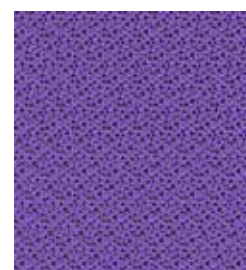
7112-MO*



7112-MW*



7113-MG*



7113-MP*



7113-MK*

*Indicates fabric used in quilt pattern. Fabrics shown are 15% of actual size.

Free Pattern Download Available at www.andoverfabrics.com